

Flexibility and mobility – whenever you want.
Simply separate seats from each other for a quick and easy reassembly: CoFix S

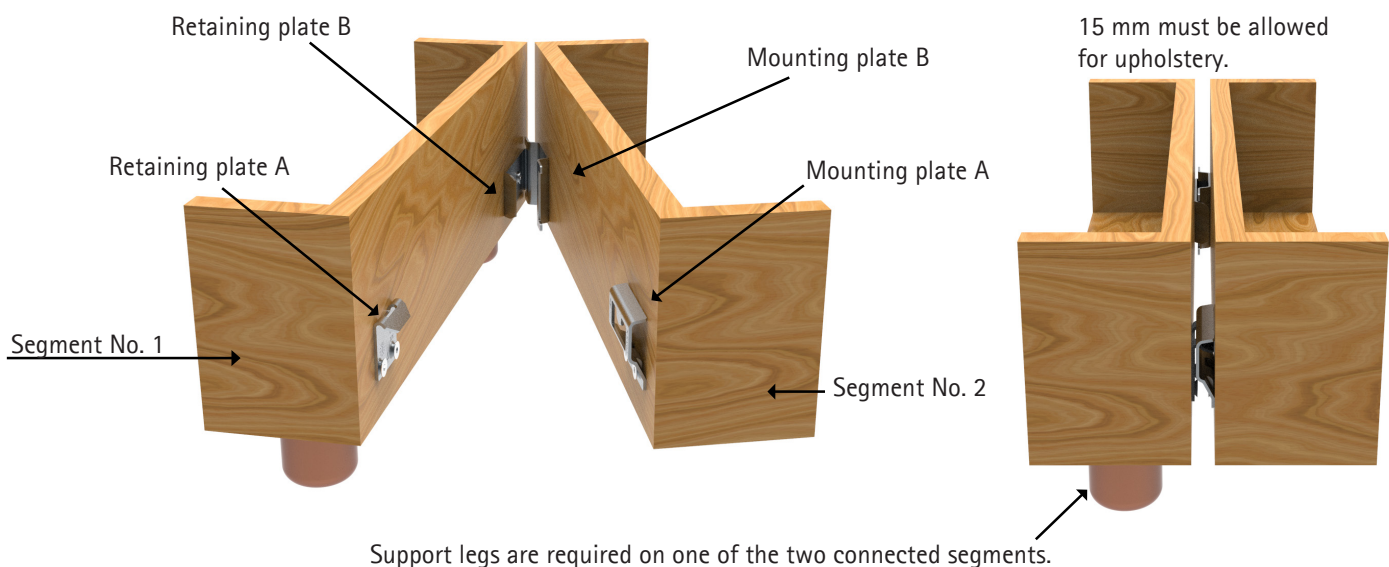


With the CoFix S connecting system seating elements can be separated and the individual parts moved comfortably. At their place of destination they can easily be reconnected.

- ▶ CoFix S does not only bring improvements during the production process of upholstered furniture, but also during storage and transport.
- ▶ The seating elements are assembled by interlinking the components to each other without any tools.
- ▶ Upholstery is not damaged while joining the elements as the component parts are easily seen.
- ▶ Easy assembly by only one person is possible.
- ▶ High stability and load capacity, therefore the component parts do not bend.
- ▶ Tolerances are optimised.
- ▶ Ease of use, no RH and LH parts.
- ▶ Close assembly of the seating elements permits a flawless design of the upholstered furniture. The width of the component parts is only 15 mm
- ▶ Assembly by means of M 6 screws
- ▶ Tested according to RAL – GZ 430



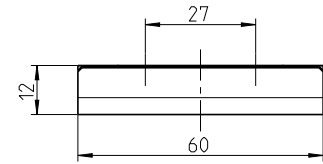
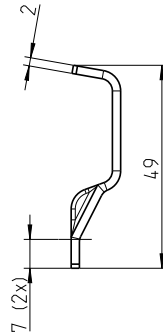
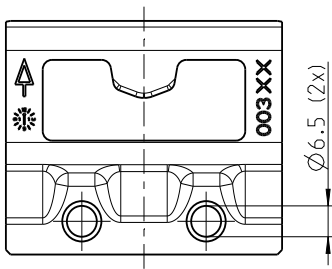
Assembly: K. D. system CoFix S



Flexibility and mobility – whenever you want: K. D. system CoFix S

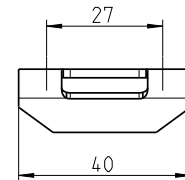
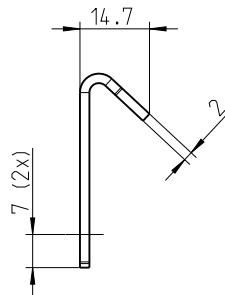
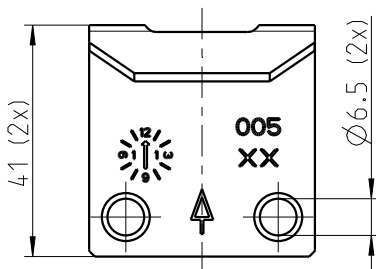
- ▶ Drawings
- ▶ Each set CoFix S comprises one retaining plate and one mounting plate A/B

CoFix S - mounting plate A



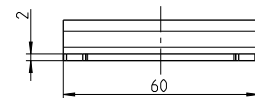
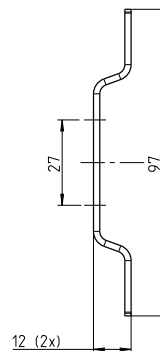
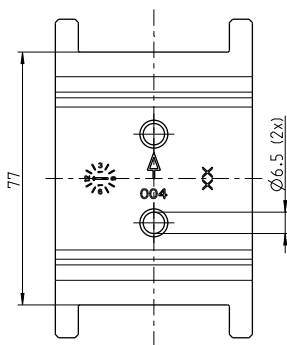
Description	ref. No	PU
CoFix S mounting plate A	1.23.100.03.00	100

CoFix S - retaining plate A



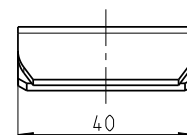
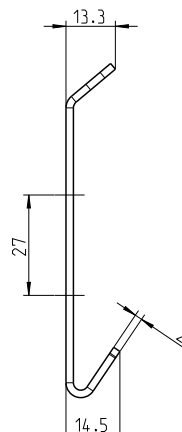
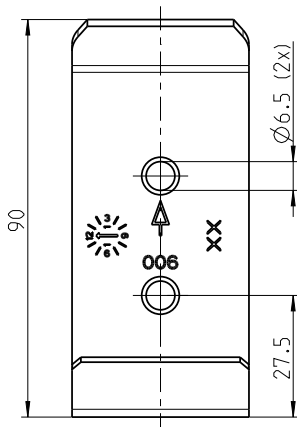
Description	ref. No	PU
CoFix S retaining plate A	1.23.100.05.00	100

CoFix S - mounting plate B



Description	ref. No	PU
CoFix S mounting plate B	1.23.100.04.00	100

CoFix S - retaining plate B



Description	ref. No	PU
CoFix S retaining plate B	1.23.100.06.00	100